



How to: Modify a DSL-L2 Setting

30 June 2010

TABLE OF CONTENTS

1	HOW TO MODIFY A DSL-L2 SETTING	3
1.1	State Information.....	3
1.2	Immediate vs Delayed Transactions.....	3
2	WEB SERVICE TRANSACTION FLOW.....	4
3	DESCRIPTIONS & XML EXAMPLES.....	4
3.1	Immediate Mode Modify DSL-L2 Service	4
3.2	Delayed Mode Modify DSL-L2 Service	7
4	REQUEST PARAMETER DEFINITIONS	8
5	DOCUMENT CONTROL SHEET	9

1 How To Modify a DSL-L2 Setting

This document details the LOLIG web service calls to make in order to modify a DSL-L2 setting on a service. The scenario outlined is for a simple case and provides an overall view of the steps involved and the order in which they need to be carried out.

1.1 State Information

The modification of a DSL service involves a single standalone web service transaction. This means there is no state information maintained in the process.

1.2 Immediate vs Delayed Transactions

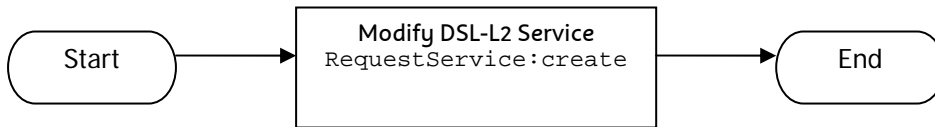
LOLIG allows two modes of transactions for DSL operations. They are immediate mode and delayed mode.

In *Immediate Mode*, LOLIG will process the request immediately and return the results and/or errors as soon as processing has been completed.

Alternately, in *Delayed Mode*, the Telstra Reference Number (Request Number) and Request Item Id(s) are returned after processing. Details of request processing can subsequently be obtained by querying the request using RequestService:enquire or RequestItemService:enhancedEnquire..

2 Web Service Transaction Flow

To modify a DSL-L2 setting for a service, a standalone LOLIG transaction is used – RequestService:Create.



3 Descriptions & XML Examples

3.1 Immediate Mode Modify DSL-L2 Service	
Web Service:	RequestService:create
Description:	This is the simplest way to modify a DSL-L2 service in immediate mode. In this scenario the Customer Requested Data has not been specified.
Example Request:	
<pre> <RCreateRequest xmlns="http://telstra.com/lolo2/b2b/parts/2004/10/10"> <request> <spReferenceNumber>1234</spReferenceNumber> <spContactName>Joe Company</spContactName> <spPhoneNumber>0399991111</spPhoneNumber> <customerContactName>Homer Simpson</customerContactName> <customerPhoneNumber>0288882222</customerPhoneNumber> <requestItems> <siteDetail> <contactName>Homer Simpson</contactName> <contactPhoneNumber>0288882222</contactPhoneNumber> </siteDetail> <workTypeDescription>Configure DSL</workTypeDescription> <service> <customerServiceNumber>0398997304</customerServiceNumber> <products> <name>DSL-L2</name> <action>Change</action> <settings> <name>End User Speed</name> <value>1.5Mbps/256Kbps</value> </settings> <settings> <name>Customer Domain Name</name> <value>N0000001K</value> </settings> <settings> <name>Virtual Path (VP)</name> <value>008</value> </settings> <settings> <name>Virtual Circuit (VC)</name> <value>00035</value> </settings> </products> </service> </requestItems> </request> </RCreateRequest> </pre>	

Example Response:

```

<RCreateResponse xmlns="http://telstra.com/lolo2/b2b/parts/2004/10/10">
  <response>
    <channelType>Web Services</channelType>
    <spName>Imp Team SP Testing</spName>
    <telstraRef>87654321</telstraRef>
    <customerContactName>Bob</customerContactName>
    <customerPhone>0123456789</customerPhone>
    <spReferenceNumber>1234</spReferenceNumber>
    <applicationDate>2008-05-05</applicationDate>
    <spContactName> Joe Company</spContactName>
    <spPhoneNumber>0399991111</spPhoneNumber>
    <requestStatusDescription>Active</requestStatusDescription>
    <activities>
      <activityId>369978745</activityId>
      <createTimeStamp>2008-05-05T02:00:46.297Z</createTimeStamp>
      <userName>Testing Queen 1</userName>
      <description>Request Submission</description>
    </activities>
    <requestItems>
      <requestItemId>66906641</requestItemId>
      <siteDetail>
        <contactName> Homer Simpson</contactName>
        <contactPhoneNumber>0288882222</contactPhoneNumber>
        <address>
          <customerName>MR SA SMITH</customerName>
          <streetNumber>7</streetNumber>
          <streetName>SMITH</streetName>
          <streetType>ST</streetType>
          <locality>FITZROY</locality>
          <postCode>3065</postCode>
        </address>
      </siteDetail>
      <appointment>
        <from>2008-05-08T22:00:00.000Z</from>
        <to>2008-05-09T02:00:00.000Z</to>
      </appointment>
      <customerRequestedDate>
        <from>2008-05-08T22:00:00.000Z</from>
        <to>2008-05-09T07:00:00.000Z</to>
      </customerRequestedDate>
      <workTypeDescription>Configure DSL</workTypeDescription>
      <requestItemStatusDescription>In Progress</requestItemStatusDescription>
      <service>
        <customerServiceNumber>0398997304</customerServiceNumber>
        <products>
          <name>DSL-L2</name>
          <action>Change</action>
          <settings>
            <name>End User Region</name>
            <value>Zone 1</value>
          </settings>
          <settings>
            <name>End User Speed</name>
            <value>1.5Mbps/256Kbps</value>
          </settings>
          <settings>
            <name>Customer Domain Name</name>
            <value> N0000001K</value>
          </settings>
          <settings>
            <name>Virtual Path (VP)</name>
            <value>008</value>
          </settings>
          <settings>
            <name>Virtual Circuit (VC)</name>
            <value>00035</value>
          </settings>
        </products>
      </service>
    </requestItems>
    <activities>
      <activityId>369978731</activityId>
      <createTimeStamp>2008-05-05T02:00:43.728Z</createTimeStamp>
      <note> B2B 87654321 in immediate mode</note>
    </activities>
  </response>
</RCreateResponse>

```

```
<userName>Testing Queen 1</userName>
<description>B2B Product Request notification</description>
</activities>
<activities>
  <activityId>369978744</activityId>
  <createTimeStamp>2008-05-05T02:00:46.218Z</createTimeStamp>
  <note>0398997304 83668380/1
</note>
  <userName> AXIS</userName>
  <description>Order Lodgement</description>
</activities>
<orderItems>
  <orderNumber>83668380</orderNumber>
  <segmentType>MOD</segmentType>
  <segmentNumber>1</segmentNumber>
</orderItems>
</requestItems>
</response>
</RCreateResponse>
```

3.2 Delayed Mode Modify DSL-L2 Service	
Web Service:	RequestService:create
Description:	This is the simplest way to modify a DSL-L2 service in delayed mode. In this scenario the Customer Requested Data has not been specified.
Example Request:	
<pre> <RCreateDelayedRequest xmlns="http://telstra.com/lolo2/b2b/parts/2004/10/10"> <request> <spReferenceNumber>1234</spReferenceNumber> <spContactName>Joe Company</spContactName> <spPhoneNumber>0399991111</spPhoneNumber> <customerContactName>Homer Simpson</customerContactName> <customerPhoneNumber>0288882222</customerPhoneNumber> <requestItems> <siteDetail> <contactName>Homer Simpson</contactName> <contactPhoneNumber>0288882222</contactPhoneNumber> </siteDetail> <workTypeDescription>Configure DSL</workTypeDescription> <service> <customerServiceNumber>0398997304</customerServiceNumber> <products> <name>DSL-L2</name> <action>Change</action> <settings> <name>End User Speed</name> <value>1.5Mbps/256Kbps</value> </settings> <settings> <name>Customer Domain Name</name> <value>N0000001K</value> </settings> <settings> <name>Virtual Path (VP)</name> <value>008</value> </settings> <settings> <name>Virtual Circuit (VC)</name> <value>00035</value> </settings> </products> </service> </requestItems> </request> </RCreateDelayedRequest> </pre>	
Example Response:	
<pre> <RCreateDelayedResponse xmlns="http://telstra.com/lolo2/b2b/parts/2004/10/10"> <response> <telstraRef>12341111</telstraRef> <spReferenceNumber>spReferenceA</spReferenceNumber> <requestItemIds>4395111</requestItemIds> </response> </RCreateDelayedResponse> </pre>	

4 Request Parameter Definitions

<request>	
<spReferenceNumber>	Service Provider specific number, provided to allow SP to track the order with own keys. This is not used by Telstra.
<spContactName>	Name of a contact person from the Service Provider and not the SP or company name.
<spPhoneNumber>	The Service Provider contact phone number.
<customerContactName>	The end user's name.
<customerPhoneNumber>	The end user's contact phone number.
<requestItems>	
<siteDetail>	
<contactName>	The end user's name.
<contactPhoneNumber>	The end user's contact phone number.
</siteDetail>	
<workTypeDescription>	Configure DSL
<service>	
<customerServiceNumber>	The CSN the DSL-L2 service will be on.
<products>	
<name>	DSL-L2
<action>	Change
<settings>	
<name>	End User Region
<value>	Metro , Regional1 , Regional2
</settings>	
<settings>	
<name>	End User Speed
<value>	1.5Mbps/256Kbps , 256Kbps/64Kbps , 512Kbps/128Kbps , 512Kbps/512Kbps , Open 1
</settings>	
<settings>	
<name>	Customer Domain Name
<value>	The Service Provider's NK number.
</settings>	
<settings>	
<name>	Virtual Path (VP)
<value>	008 <standard setting but this may differ between Service Provider's>
</settings>	
<settings>	
<name>	Virtual Circuit (VC)
<value>	00035 <standard setting but this may differ between Service Provider's>
</settings>	
</products>	
</service>	
</requestItems>	
</request>	

Legend:

- Black – Description of parameter.
- Blue – Choice of actual values to use.
- Bold – Actual Value to use.
- Green – optional parameter.

5 DOCUMENT CONTROL SHEET

Contact for Enquiries and Proposed Changes

If you have any questions regarding this document contact:

Name: Keith Berry

Designation: Online Training Manager

Phone: (07) 34552060

Issue No.	Issue Date	Nature of Amendment
1	30/06/2010	First Issue