



## How to: Create a New One Step PSTN DSL Service

30 June 2010

**TABLE OF CONTENTS**

**1 HOW TO CREATE A NEW ONE STEP PSTN DSL SERVICE .....3**

1.1 State Information.....3

1.2 Terminating the One Step Process .....3

1.3 Re-Entering the Multi-step Process.....3

**2 WEB SERVICE TRANSACTION FLOW.....4**

**3 DESCRIPTIONS & XML EXAMPLES.....5**

3.1 Create Multi-step Request.....5

3.2 Add Request Item.....5

3.3 Select Service Template .....6

3.4 Add Service Template to Request.....6

3.5 Find Site Address .....7

3.6 Add Site Address to Request.....8

3.7 Find Inplace CSNs at the Address.....8

3.8 Add Inplace to Request .....9

3.9 Site Connection Details.....11

3.10 CSN Allocation .....11

3.11 Add CSN to Request .....12

3.12 Find Offering Collection .....13

3.13 Add OfferingCollection to Request.....14

3.14 Create Account Details.....15

3.15 Provide Customer Requested Date .....16

3.16 Submit & Finish .....17

**4 DOCUMENT CONTROL SHEET .....18**

# 1 How To Create a New One Step PSTN DSL Service

This document details the LOLIG web service calls to make in order to create a new One Step PSTN DSL service. The scenario outlined is for a simple case and provides an overall view of the steps involved and the order in which they need to be carried out.

For more detailed scenarios refer to the LOLIG Design Guide.

## 1.1 State Information

Creating a new One Step PSTN DSL service involves calling a sequence of web services that share information between them. At any given point in the process the information previously and currently sent is referred to as "state". It is important that state between web service calls are maintained, as outputs from one web service call can be used as inputs into the next or subsequent web services further along the process.

## 1.2 Terminating the One Step Process

If the client decides to terminate the One Step creation process (prior to final submission) for any reason, a call to the web service `RequestService:cancelMultiStep` must be done. This is also true if there are network problems and the client times out. If it is decided to terminate the process due to network issues, a call to `RequestService:cancelMultiStep` should be attempted. Alternatively, when the network resumes, and the client wishes to start a new multi-step process, then a call should first be made to `RequestService:cancelMultiStep` to ensure that the previous request has been closed off. In this case, the client can ignore any SOAP errors that may be returned such as Request Item does not exist.

For more information refer to section 8.2 of the LOLIG Design Guide.

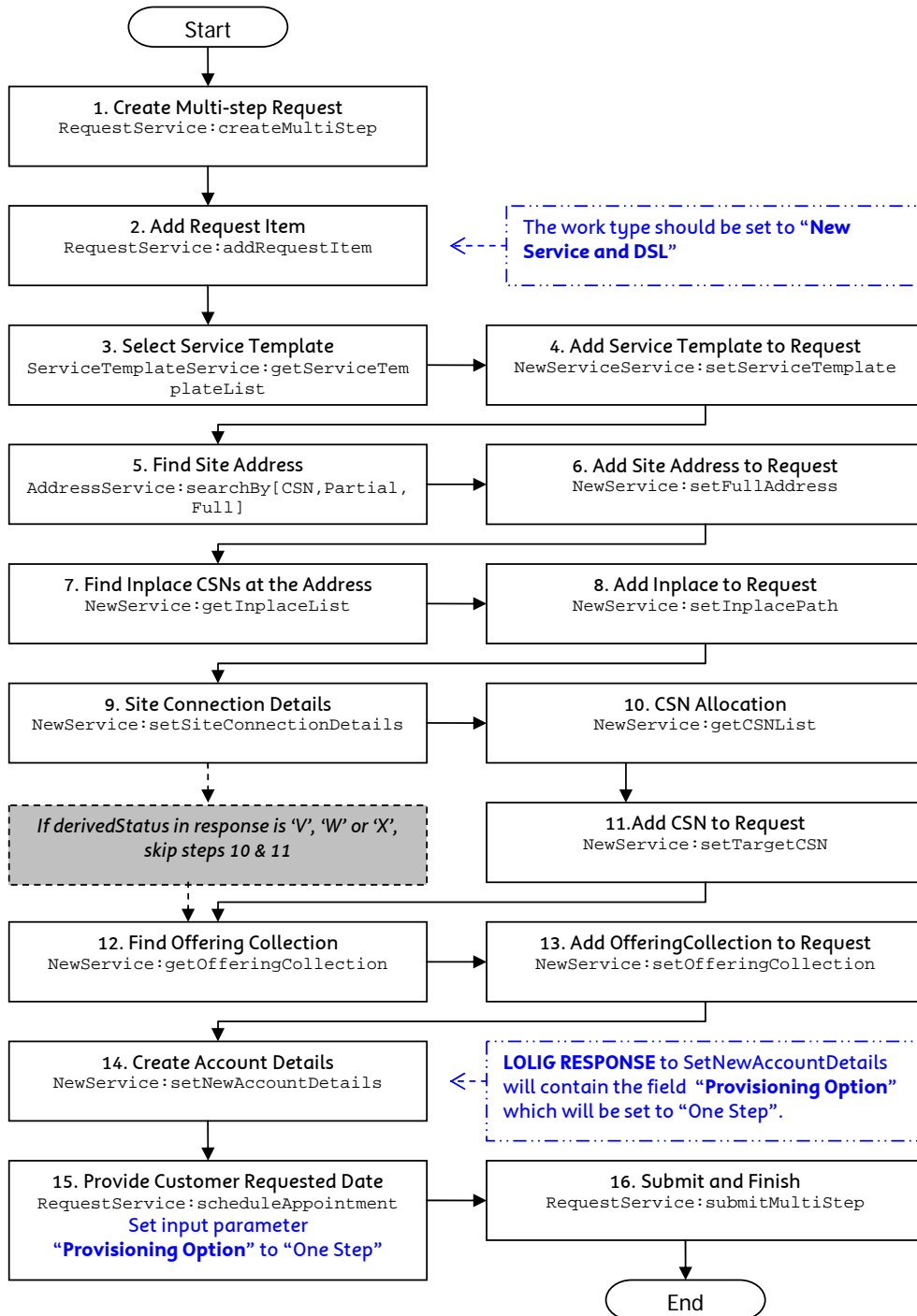
## 1.3 Re-Entering the Multi-step Process

In some situations the multi-step process may halt or pause, or may need to go back several steps (for example, obtaining more information or details from the end user). In such a case it is important that re-entering the multi-step process flow occur at the appropriate point.

For detailed information on the re-entry process, refer to section 8.3 in the LOLIG Design Guide.

## 2 Web Service Transaction Flow

To create a new PSTN One Step PSTN DSL service, several multi-step conversational LOLIG transactions are used. A simple scenario is shown below (warnings, errors, etc are not shown).



### 3 Descriptions & XML Examples

3.1 <b>Create Multi-step Request</b>	
<b>Web Service:</b>	RequestService:createMultiStep
<b>Description:</b>	This initialises LOLIG for a multi-step process (i.e. creates space for state data, creates timers etc). Contact details of the SP and end user are submitted in this step. Returns <telstraRef>, which needs to be saved and sent in Step 2.
<b>Example Request:</b>	
<pre>&lt;RCreateMultiStepRequest xmlns="http://telstra.com/lolo2/b2b/parts/2004/10/10"&gt;   &lt;request&gt;     &lt;spReferenceNumber&gt;1234&lt;/spReferenceNumber&gt;     &lt;spContactName&gt;Homer Simpson&lt;/spContactName&gt;     &lt;spPhoneNumber&gt;0399991111&lt;/spPhoneNumber&gt;     &lt;projectID&gt;123&lt;/projectID&gt;     &lt;customerContactName&gt;Marge Simpson&lt;/customerContactName&gt;     &lt;customerPhoneNumber&gt;0388638002&lt;/customerPhoneNumber&gt;     &lt;mediumEntry&gt;I&lt;/mediumEntry&gt;   &lt;/request&gt; &lt;/RCreateMultiStepRequest&gt;</pre>	
<b>Example Response:</b>	
<pre>&lt;RCreateMultiStepResponse xmlns="http://telstra.com/lolo2/b2b/parts/2004/10/10"&gt;   &lt;telstraRef&gt;12345679&lt;/telstraRef&gt;   &lt;nextOperation&gt;RequestService:cancelMultiStep&lt;/nextOperation&gt;   &lt;nextOperation&gt;RequestService:addRequestItem&lt;/nextOperation&gt; &lt;/RCreateMultiStepResponse&gt;</pre>	

3.2 <b>Add Request Item</b>	
<b>Web Service:</b>	RequestService:addRequestItem
<b>Description:</b>	<p>All information for an order is encapsulated in a high level structure called a Request Item. This step creates an initial request item for the order and returns &lt;requestItemId&gt;, which needs to be saved and sent in subsequent calls</p> <p>Only two parameters required in this call:  The telstraRef as received in Step 1.  The work type description: <b>New Service and DSL</b></p>
<b>Example Request:</b>	
<pre>&lt;RAddRequestItemRequest xmlns="http://telstra.com/lolo2/b2b/parts/2004/10/10"&gt;   &lt;telstraRef&gt;12345679&lt;/telstraRef&gt;   &lt;workTypeDescription&gt;New Service and DSL&lt;/workTypeDescription&gt; &lt;/RAddRequestItemRequest&gt;</pre>	
<b>Example Response:</b>	
<pre>&lt;RAddRequestItemResponse xmlns="http://telstra.com/lolo2/b2b/parts/2004/10/10"&gt;   &lt;requestItemId&gt;10000006&lt;/requestItemId&gt;   &lt;nextOperation&gt;RequestService:cancelMultiStep&lt;/nextOperation&gt;   &lt;nextOperation&gt;NewServiceService:setServiceTemplate&lt;/nextOperation&gt; &lt;/RAddRequestItemResponse&gt;</pre>	

<b>3.3 Select Service Template</b>	
<b>Web Service:</b>	ServiceTemplateService:getServiceTemplateList
<b>Description:</b>	This will return available service templates for you to choose from. Select a service template and save its NpoId which will be sent in Step 4.
<b>Example Request:</b>	
<pre>&lt;STGetServiceTemplateListRequest xmlns="http://telstra.com/lolo2/b2b/parts/2004/10/10" /&gt;</pre>	
<b>Example Response:</b>	
<pre>&lt;STGetServiceTemplateListResponse xmlns="http://telstra.com/lolo2/b2b/parts/2004/10/10"&gt;   &lt;serviceTemplateList&gt;     &lt;npoId&gt;123456&lt;/npoId&gt;     &lt;networkName&gt;Voice&lt;/networkName&gt;     &lt;networkProductName&gt;Residential&lt;/networkProductName&gt;     &lt;npoName&gt;Standard&lt;/npoName&gt;     &lt;virtualFlag&gt;1&lt;/virtualFlag&gt;   &lt;/serviceTemplateList&gt; &lt;/STGetServiceTemplateListResponse&gt;</pre>	

<b>3.4 Add Service Template to Request</b>	
<b>Web Service:</b>	NewServiceService:setServiceTemplate
<b>Description:</b>	This will assign a service template as the base for the new service. Two parameters required: the requestItemId from Step 2, and the NpoId from Step 3.
<b>Example Request:</b>	
<pre>&lt;NSSetServiceTemplateRequest xmlns="http://telstra.com/lolo2/b2b/parts/2004/10/10"&gt;   &lt;requestItem&gt;     &lt;requestItemId&gt;10000006&lt;/requestItemId&gt;     &lt;npoId&gt;123456&lt;/npoId&gt;   &lt;/requestItem&gt; &lt;/NSSetServiceTemplateRequest&gt;</pre>	
<b>Example Response:</b>	
<pre>&lt;NSSetServiceTemplateResponse xmlns="http://telstra.com/lolo2/b2b/parts/2004/10/10"&gt;   &lt;nextOperation&gt;NewServiceService:cancelRequestItem&lt;/nextOperation&gt;   &lt;nextOperation&gt;NewServiceService:setFullAddress&lt;/nextOperation&gt; &lt;/NSSetServiceTemplateResponse&gt;</pre>	

<b>3.5 Find Site Address</b>	
<b>Web Service:</b>	AddressService.searchBy[CSN,Partial,Full]
<b>Description:</b>	In order to create a new service, the end users address needs to be specified. Search for the End user address using one of the AddressService operations.
<b>Example Request:</b>	
<pre>&lt;ADSearchByPartialRequest xmlns="http://telstra.com/lolo2/b2b/parts/2004/10/10"&gt;   &lt;address&gt;     &lt;streetName&gt;Evergreen&lt;/streetName&gt;     &lt;locality&gt;SYNDAL&lt;/locality&gt;     &lt;postCode&gt;4111&lt;/postCode&gt;   &lt;/address&gt; &lt;/ADSearchByPartialRequest&gt;</pre>	
<b>Example Response:</b>	
<pre>&lt;ADSearchByPartialResponse xmlns="http://telstra.com/lolo2/b2b/parts/2004/10/10"&gt;   &lt;address&gt;     &lt;rangeType&gt;ODD&lt;/rangeType&gt;     &lt;streetNumberLower&gt;00000101&lt;/streetNumberLower&gt;     &lt;streetNumberLowerSuffix&gt;A&lt;/streetNumberLowerSuffix&gt;     &lt;streetNumberUpper&gt;00000233&lt;/streetNumberUpper&gt;     &lt;streetName&gt;High&lt;/streetName&gt;     &lt;streetType&gt;ST&lt;/streetType&gt;     &lt;locality&gt;SYNDAL&lt;/locality&gt;     &lt;postCode&gt;3150&lt;/postCode&gt;     &lt;exchangeServiceArea&gt;SYRA&lt;/exchangeServiceArea&gt;     &lt;facRealm&gt;33&lt;/facRealm&gt;   &lt;/address&gt;   &lt;address&gt;     &lt;rangeType&gt;EVEN&lt;/rangeType&gt;     &lt;streetNumberLower&gt;00000102&lt;/streetNumberLower&gt;     &lt;streetNumberLowerSuffix&gt;A&lt;/streetNumberLowerSuffix&gt;     &lt;streetNumberUpper&gt;00000264&lt;/streetNumberUpper&gt;     &lt;streetNumberUpperSuffix&gt;A&lt;/streetNumberUpperSuffix&gt;     &lt;streetName&gt;High&lt;/streetName&gt;     &lt;streetType&gt;ST&lt;/streetType&gt;     &lt;locality&gt;Syndal&lt;/locality&gt;     &lt;postCode&gt;3150&lt;/postCode&gt;     &lt;exchangeServiceArea&gt;SYRA&lt;/exchangeServiceArea&gt;     &lt;facRealm&gt;33&lt;/facRealm&gt;   &lt;/address&gt;   &lt;address&gt;     &lt;rangeType&gt;EVEN&lt;/rangeType&gt;     &lt;streetNumberLower&gt;00000252&lt;/streetNumberLower&gt;     &lt;streetNumberLowerSuffix&gt;A&lt;/streetNumberLowerSuffix&gt;     &lt;streetNumberUpper&gt;00000502&lt;/streetNumberUpper&gt;     &lt;streetNumberUpperSuffix&gt;A&lt;/streetNumberUpperSuffix&gt;     &lt;streetName&gt;High&lt;/streetName&gt;     &lt;streetType&gt;ST&lt;/streetType&gt;     &lt;locality&gt;Syndal&lt;/locality&gt;     &lt;postCode&gt;3150&lt;/postCode&gt;     &lt;exchangeServiceArea&gt;SYRA&lt;/exchangeServiceArea&gt;     &lt;facRealm&gt;33&lt;/facRealm&gt;   &lt;/address&gt; &lt;/ADSearchByPartialResponse&gt;</pre>	

<b>3.6 Add Site Address to Request</b>	
<b>Web Service:</b>	NewService:setFullAddress
<b>Description:</b>	Choose an address returned in Step 5, and add the address details to the request by specifying the <requestItemId> (from Step 2) and the address details returned from Step 5.
<b>Example Request:</b>	
<pre>&lt;NSSetFullAddressRequest xmlns="http://telstra.com/lolo2/b2b/parts/2004/10/10"&gt;   &lt;requestItemId&gt;10000006&lt;/requestItemId&gt;   &lt;address&gt;     &lt;streetName&gt;Evergreen&lt;/streetName&gt;     &lt;streetType&gt;Terrace&lt;/streetType&gt;     &lt;locality&gt;SYNDAL&lt;/locality&gt;     &lt;postCode&gt;4111&lt;/postCode&gt;   &lt;/address&gt;   &lt;customerDetails&gt;     &lt;customerName&gt;Homer Simpson&lt;/customerName&gt;     &lt;siteContactName&gt;Marge Simpson&lt;/siteContactName&gt;     &lt;siteContactPhone&gt;0399991111&lt;/siteContactPhone&gt;   &lt;/customerDetails&gt; &lt;/NSSetFullAddressRequest&gt;</pre>	
<b>Example Response:</b>	
<pre>&lt;NSSetFullAddressResponse xmlns="http://telstra.com/lolo2/b2b/parts/2004/10/10"&gt;   &lt;nextOperation&gt;NewServiceService:cancelRequestItem&lt;/nextOperation&gt;   &lt;nextOperation&gt;NewServiceService:getInplaceList&lt;/nextOperation&gt; &lt;/NSSetFullAddressResponse&gt;</pre>	

Formatted: Swedish (Sweden)

<b>3.7 Find Inplace CSNs at the Address</b>	
<b>Web Service:</b>	NewService:getInplaceList
<b>Description:</b>	<p>This operation will retrieve all the active/inactive PSTN services at the address specified in Step 6. The only parameter is the requestItemId which Step 6 operated on.</p> <p>The data to watch for in the response are:</p> <ol style="list-style-type: none"> <li>inplaceId (save it as it will be sent in Step 8).</li> <li>customerServiceNumber</li> <li>status – I for inactive</li> </ol>
<b>Example Request:</b>	
<pre>&lt;NSGetInplaceListRequest xmlns="http://telstra.com/lolo2/b2b/parts/2004/10/10"&gt;   &lt;requestItemId&gt;10000006&lt;/requestItemId&gt; &lt;/NSGetInplaceListRequest&gt;</pre>	
<b>Example Response:</b>	
<pre>&lt;NSGetInplaceListResponse xmlns="http://telstra.com/lolo2/b2b/parts/2004/10/10"&gt;   &lt;inplaceDetails&gt;     &lt;inplaceId&gt;inplaceId1&lt;/inplaceId&gt;     &lt;customerServiceNumber&gt;0399638018&lt;/customerServiceNumber&gt;     &lt;derivedStatus&gt;I&lt;/derivedStatus&gt;     &lt;status&gt;I&lt;/status&gt;     &lt;availability&gt;2005-10-04&lt;/availability&gt;     &lt;preProvisionedFlag&gt;Y&lt;/preProvisionedFlag&gt;     &lt;mdfId&gt;mdfId&lt;/mdfId&gt;     &lt;address&gt;       &lt;subAddressType&gt;SHOP&lt;/subAddressType&gt;       &lt;subAddressNumber&gt;1&lt;/subAddressNumber&gt;       &lt;additionalAddress&gt;VICTORIA MALL&lt;/additionalAddress&gt;       &lt;streetNumber&gt;1&lt;/streetNumber&gt;       &lt;streetNumberSuffix&gt;A&lt;/streetNumberSuffix&gt;       &lt;streetName&gt;BRIDGE&lt;/streetName&gt;     &lt;/address&gt;   &lt;/inplaceDetails&gt; &lt;/NSGetInplaceListResponse&gt;</pre>	

```

<streetType>RD</streetType>
<streetSuffix>EAST</streetSuffix>
<locality>BENDIGO</locality>
<postCode>3550</postCode>
</address>
</inplaceDetails>
<nextOperation>NewServiceService:cancelRequestItem</nextOperation>
<nextOperation>NewServiceService:setInplaceList</nextOperation>
</NSGetInplaceListResponse>
    
```

**3.8 Add Inplace to Request**

**Web Service:** NewService:setInplacePath

**Description:** Use this step to select which inplace CSN to use for the new PSTN service. Two parameters required: the `requestItemId` from Step 2, and the `inplaceId` from Step 7.

If you do not want to use one of the listed inplace CSN returned in Step 7, you can create a new inplace by setting the second parameter (`<inplaceSelection>`) to "New Line".

If there is some problem you can set the second parameter to "TW Assessment".

This returns the `<siteConnectionDetails>` which needs to be saved and used in the next step.

For One Step, the SQ results will also be returned. See the `<serviceQualificationResult>` element of the Response.

**Example Request:**

```

<NSSetInplacePathRequest xmlns="http://telstra.com/lolo2/b2b/parts/2004/10/10">
  <requestItem>
    <requestItemId>10000006</requestItemId>
    <inplaceSelection>New Line</inplaceSelection>
  </requestItem>
</NSSetInplacePathRequest>
    
```

Formatted: English (Australia)

**Example Response:**

```

<NSSetInplacePathResponse xmlns="http://telstra.com/lolo2/b2b/parts/2004/10/10">
  <siteConnectionDetails>
    <siteConnectionPoints>
      <siteConnectionId>18</siteConnectionId>
      <description>New PSTN Connection</description>
      <feeForServiceRequired xsi:type="xsd:boolean">1</feeForServiceRequired>
      <contractorNameRequired xsi:type="xsd:boolean">0</contractorNameRequired>
      <contractorPhoneRequired xsi:type="xsd:boolean">0</contractorPhoneRequired>
      <defaultSCP xsi:type="xsd:boolean">1</defaultSCP>
    </siteConnectionPoints>
  </siteConnectionDetails>
  <serviceQualificationResult>
    <searchFocus>Address</searchFocus>
    <technologySQOutcomes>
      <technologyTypeName>DSL</technologyTypeName>
      <Available>Yes</Available>
      <description>DSL is supported.</description>
      <limitingFactors>
        <limitingFactorType>Secondary Network</limitingFactorType>
        <limitingFactorName>Alternate path check required.</limitingFactorName>
      </limitingFactors>
    </technologySQOutcomes>
  </serviceQualificationResult>
  <nextOperation>NewServiceService:cancelRequestItem</nextOperation>
  <nextOperation>NewServiceService:setInplacePath</nextOperation>
  <nextOperation>NewServiceService:setSiteConnectionDetails</nextOperation>
</NSSetInplacePathResponse>
    
```

```
<nextOperation>RequestService:cancelMultiStep</nextOperation>  
</NSSetInplacePathResponse>
```

<b>3.9 Site Connection Details</b>	
<b>Web Service:</b>	NewService:setSiteConnectionDetails
<b>Description:</b>	Assign the <siteConnectionId> returned in Step 8 to the request. Three mandatory parameters are: <ul style="list-style-type: none"> <li>a) requestItemId (from Step 2)</li> <li>b) siteConnectionId (from Step 8)</li> <li>c) firstLinePremises – true if this service is to be the first line at the address.</li> </ul>
<b>Example Request:</b>	
<pre>&lt;NSSetSiteConnectionDetailsRequest xmlns="http://telstra.com/lolo2/b2b/parts/2004/10/10"&gt;   &lt;requestItem&gt;     &lt;requestItemId&gt;10000006&lt;/requestItemId&gt;     &lt;siteConnectionId&gt;12345678&lt;/siteConnectionId&gt;     &lt;firstLineinPremises&gt;&gt;false&lt;/firstLineinPremises&gt;   &lt;/requestItem&gt; &lt;/NSSetSiteConnectionDetailsRequest&gt;</pre>	
<b>Example Response:</b>	
<pre>&lt;NSSetSiteConnectionDetailsResponse xmlns="http://telstra.com/lolo2/b2b/parts/2004/10/10"&gt;   &lt;nextOperation&gt;NewServiceService:cancelRequestItem&lt;/nextOperation&gt;   &lt;nextOperation&gt;NewServiceService:getCSNList&lt;/nextOperation&gt;   &lt;nextOperation&gt;NewServiceService:setFullAddress&lt;/nextOperation&gt; &lt;/NSSetSiteConnectionDetailsResponse&gt;</pre>	

<b>3.10 CSN Allocation</b>	
<b>Web Service:</b>	NewService:getCSNList
<b>Description:</b>	This retrieves a list of available CSNs that can be used as the CSN for the new service. There are two mandatory parameters: <ul style="list-style-type: none"> <li>a) requestItemId (from Step 2)</li> <li>b) timezone (Australian State abbreviation)</li> </ul> (Note: It is possible that no CSNs are returned).
<b>Example Request:</b>	
<pre>&lt;NSGetCSNListRequest xmlns="http://telstra.com/lolo2/b2b/parts/2004/10/10"&gt;   &lt;requestItem&gt;     &lt;requestItemId&gt;10000006&lt;/requestItemId&gt;     &lt;timezone&gt;VIC&lt;/timezone&gt;   &lt;/requestItem&gt; &lt;/NSGetCSNListRequest&gt;</pre>	
<b>Example Response:</b>	
<pre>&lt;NSGetCSNListResponse xmlns="http://telstra.com/lolo2/b2b/parts/2004/10/10"&gt;   &lt;availableServices&gt;0350000010&lt;/availableServices&gt;   &lt;availableServices&gt;0350000011&lt;/availableServices&gt;   &lt;availableServices&gt;0350000012&lt;/availableServices&gt;   &lt;availableServices&gt;0350000013&lt;/availableServices&gt;   &lt;availableServices&gt;0350000014&lt;/availableServices&gt;   &lt;availableServices&gt;0350000015&lt;/availableServices&gt;   &lt;availableServices&gt;0350000016&lt;/availableServices&gt;   &lt;availableServices&gt;0350000017&lt;/availableServices&gt;   &lt;availableServices&gt;0350000018&lt;/availableServices&gt;   &lt;availableServices&gt;0350000019&lt;/availableServices&gt;   &lt;nextOperation&gt;NewServiceService:cancelRequestItem&lt;/nextOperation&gt;   &lt;nextOperation&gt;NewServiceService:getCSNList&lt;/nextOperation&gt;   &lt;nextOperation&gt;NewServiceService:setTargetCSN&lt;/nextOperation&gt; &lt;/NSGetCSNListResponse&gt;</pre>	

3.11 Add CSN to Request	
<b>Web Service:</b>	NewService:setTargetCSN
<b>Description:</b>	Use this step to select a CSN from the list returned in Step 10 (the selected CSN <u>must</u> be in the list). Two parameters: the requestItemId from Step 2 (mandatory), and a targetCSN from Step 10 (optional). If no CSNs were returned in Step 10, then omit the second parameter.
<b>Example Request:</b>	
<pre>&lt;NSSetTargetCSNRequest xmlns="http://telstra.com/lolo2/b2b/parts/2004/10/10"&gt;   &lt;requestItem&gt;     &lt;requestItemId&gt;10000006&lt;/requestItemId&gt;     &lt;targetCSN&gt;0399991111&lt;/targetCSN&gt;   &lt;/requestItem&gt; &lt;/NSSetTargetCSNRequest&gt;</pre>	
<b>Example Response:</b>	
<pre>&lt;NSSetTargetCSNResponse xmlns="http://telstra.com/lolo2/b2b/parts/2004/10/10"&gt;   &lt;nextOperation&gt;NewServiceService:cancelRequestItem&lt;/nextOperation&gt;   &lt;nextOperation&gt;NewServiceService:setFullAddress&lt;/nextOperation&gt;   &lt;nextOperation&gt;NewServiceService:getOfferingCollection&lt;/nextOperation&gt; &lt;/NSSetTargetCSNResponse&gt;</pre>	

Formatted: English (Australia)

<b>3.12 Find Offering Collection</b>	
<b>Web Service:</b>	NewService:getOfferingCollection
<b>Description:</b>	This step is used to retrieve an initial set of products which are to be placed on the new service. One parameter: the <code>requestItemId</code> from Step 2 (mandatory),
<b>Example Request:</b>	
<pre>&lt;NSGetOfferingCollectionRequest xmlns="http://telstra.com/lolo2/b2b/parts/2004/10/10"&gt;   &lt;requestItemId&gt;10000006&lt;/requestItemId&gt; &lt;/NSGetOfferingCollectionRequest&gt;</pre>	
<b>Example Response:</b>	
<pre>&lt;NSGetOfferingCollectionResponse xmlns="http://telstra.com/lolo2/b2b/parts/2004/10/10"&gt;   &lt;product&gt;     &lt;productName&gt;PSTN Line&lt;/productName&gt;     &lt;systemAction&gt;Add&lt;/systemAction&gt;     &lt;validActions&gt;Add&lt;/validActions&gt;     &lt;settings&gt;       &lt;settingName&gt;Line Type&lt;/settingName&gt;       &lt;settingValue&gt;Residential&lt;/settingValue&gt;     &lt;/settings&gt;   &lt;/product&gt;   &lt;product&gt;     &lt;productName&gt;Long Distance Carrier Settings&lt;/productName&gt;     &lt;systemAction&gt;Add&lt;/systemAction&gt;     &lt;validActions&gt;Add&lt;/validActions&gt;     &lt;settings&gt;       &lt;settingName&gt;Provider&lt;/settingName&gt;       &lt;settingValue&gt;ComTel&lt;/settingValue&gt;     &lt;/settings&gt;   &lt;/product&gt;   &lt;product&gt;     &lt;productName&gt;Network Access&lt;/productName&gt;     &lt;systemAction&gt;Add&lt;/systemAction&gt;     &lt;validActions&gt;Add&lt;/validActions&gt;     &lt;settings&gt;       &lt;settingName&gt;Access Level&lt;/settingName&gt;       &lt;settingValue&gt;NA0: LOCAL, TK OP, STD, VAS &amp;amp; 0011&lt;/settingValue&gt;     &lt;/settings&gt;   &lt;/product&gt;   &lt;product&gt;     &lt;productName&gt;IceCream Residential&lt;/productName&gt;     &lt;systemAction&gt;Add&lt;/systemAction&gt;     &lt;validActions&gt;Add&lt;/validActions&gt;   &lt;/product&gt;   &lt;nextOperation&gt;NewServiceService:cancelRequestItem&lt;/nextOperation&gt;   &lt;nextOperation&gt;NewServiceService:setOfferingCollection&lt;/nextOperation&gt; &lt;/NSGetOfferingCollectionResponse&gt;</pre>	

<b>3.13 Add OfferingCollection to Request</b>	
<b>Web Service:</b>	NewService:setOfferingCollection
<b>Description:</b>	Step 12 returned the products that are to be placed on the new service, but if you wish to add/change/delete any of these products, then this step can do it. Two parameters: the <code>requestItemId</code> from Step 2 (mandatory), and a list of products and their settings.
<b>Example Request:</b>	
<pre>&lt;NSSetOfferingCollectionRequest xmlns="http://telstra.com/lolo2/b2b/parts/2004/10/10"&gt;   &lt;requestItemId&gt;10000006&lt;/requestItemId&gt;   &lt;product&gt;     &lt;productName&gt;Silent Number&lt;/productName&gt;     &lt;action&gt;Add&lt;/action&gt;     &lt;settings&gt;       &lt;settingName&gt;Type&lt;/settingName&gt;       &lt;settingValue&gt;Residential&lt;/settingValue&gt;     &lt;/settings&gt;   &lt;/product&gt;   &lt;product&gt;     &lt;productName&gt;Stop outgoing CLI Presentation&lt;/productName&gt;     &lt;action&gt;Add&lt;/action&gt;     &lt;settings&gt;       &lt;settingName&gt;Override Setting&lt;/settingName&gt;       &lt;settingValue&gt;With Override&lt;/settingValue&gt;     &lt;/settings&gt;   &lt;/product&gt; &lt;/NSSetOfferingCollectionRequest&gt;</pre>	
<b>Example Response:</b>	
<pre>&lt;NSSetOfferingCollectionResponse xmlns="http://telstra.com/lolo2/b2b/parts/2004/10/10"&gt;   &lt;product&gt;     &lt;productName&gt;Directory Details&lt;/productName&gt;     &lt;action&gt;Add&lt;/action&gt;     &lt;settings&gt;       &lt;settingName&gt;Listing Type&lt;/settingName&gt;       &lt;newSettingValue&gt;List Entry&lt;/newSettingValue&gt;     &lt;/settings&gt;     &lt;settings&gt;       &lt;settingName&gt;Directory Type&lt;/settingName&gt;       &lt;newSettingValue&gt;Residential&lt;/newSettingValue&gt;     &lt;/settings&gt;     &lt;settings&gt;       &lt;settingName&gt;Contact Name&lt;/settingName&gt;       &lt;newSettingValue&gt;Con Tact&lt;/newSettingValue&gt;     &lt;/settings&gt;     &lt;settings&gt;       &lt;settingName&gt;ContactNumber&lt;/settingName&gt;       &lt;newSettingValue&gt;0332222222&lt;/newSettingValue&gt;     &lt;/settings&gt;     &lt;settings&gt;       &lt;settingName&gt;Subsequent&lt;/settingName&gt;     &lt;/settings&gt;     &lt;settings&gt;       &lt;settingName&gt;Listing Name&lt;/settingName&gt;       &lt;newSettingValue&gt;Con Tact&lt;/newSettingValue&gt;     &lt;/settings&gt;   &lt;/product&gt;   &lt;nextOperation&gt;NewServiceService:cancelRequestItem&lt;/nextOperation&gt;   &lt;nextOperation&gt;NewServiceService:setfullAddress&lt;/nextOperation&gt;   &lt;nextOperation&gt;NewServiceService:setAccountCSN&lt;/nextOperation&gt;   &lt;nextOperation&gt;NewServiceService:setNewAccountDetails&lt;/nextOperation&gt; &lt;/NSSetOfferingCollectionResponse&gt;</pre>	

3.14 Create Account Details	
<b>Web Service:</b>	NewService:setNewAccountDetails
<b>Description:</b>	<p>Now that the service has been configured, all that is left to do is to associate it with a billing account. Because this is a new PSTN workflow, a new account will need to be created. Two mandatory parameters: the <code>requestItemId</code> from Step 2, and the customer details for the new account (<code>customerType</code> is either <code>Residential</code> or <code>Company</code>).</p> <p>Once LOLIG has set the account details, it returns the list of appointment types for the order (and also activities). The <code>appointmentType</code> should be saved as it is used in Step 15.</p> <p>Note, that the field <code>provisioningOptions</code> will also be returned.</p>
<b>Example Request:</b>	
<pre>&lt;NSSetNewAccountDetailsRequest xmlns="http://telstra.com/lolo2/b2b/parts/2004/10/10"&gt;   &lt;requestItem&gt;     &lt;requestItemId&gt;10000006&lt;/requestItemId&gt;     &lt;newAccountDetails&gt;       &lt;customerType&gt;Personal&lt;/customerType&gt;       &lt;customerName&gt;Simpson&lt;/customerName&gt;       &lt;customerGivenNames&gt;Homer&lt;/customerGivenNames&gt;       &lt;courtesyTitle&gt;MR&lt;/courtesyTitle&gt;       &lt;dateOfBirth&gt;1986-02-23&lt;/dateOfBirth&gt;     &lt;/newAccountDetails&gt;   &lt;/requestItem&gt; &lt;/NSSetNewAccountDetailsRequest&gt;</pre>	
<b>Example Response:</b>	
<pre>&lt;NSSetNewAccountDetailsResponse xmlns="http://telstra.com/lolo2/b2b/parts/2004/10/10"&gt;   &lt;requestItemActivities&gt;     &lt;createdTimeStamp&gt;2005-10-12T00:09:00.001Z&lt;/createdTimeStamp&gt;     &lt;description&gt;Inplace Service Selection&lt;/description&gt;     &lt;userName&gt;Connie ComTel&lt;/userName&gt;     &lt;reason&gt;Null&lt;/reason&gt;     &lt;notes&gt;Account Details Confirmed&lt;/notes&gt;   &lt;/requestItemActivities&gt;   &lt;requestItemActivities&gt;     &lt;createdTimeStamp&gt;2008-02-20T04:45:26.561Z&lt;/createdTimeStamp&gt;     &lt;description&gt;SQ Technology Outcomes&lt;/description&gt;     &lt;userName&gt;E1810628869S92&lt;/userName&gt;     &lt;notes&gt;Search Focus: Address SQ Error: Core system unable to process request.       Contact Telstra Wholesale.&lt;/notes&gt;   &lt;/requestItemActivities&gt;   &lt;appointmentType&gt;     &lt;component&gt;Connection&lt;/component&gt;     &lt;appointmentType&gt;Exchange&lt;/appointmentType&gt;     &lt;provisioningOption&gt;One Step&lt;/provisioningOption&gt;   &lt;/appointmentType&gt;   &lt;nextOperation&gt;RequestService:cancelMultiStep&lt;/nextOperation&gt;   &lt;nextOperation&gt;RequestService:deleteRequestItem&lt;/nextOperation&gt;   &lt;nextOperation&gt;RequestService:scheduleAppointment&lt;/nextOperation&gt; &lt;/NSSetNewAccountDetailsResponse&gt;</pre>	

Formatted: French (France)

<b>3.15 Provide Customer Requested Date</b>	
<b>Web Service:</b>	RequestService:scheduleAppointment
<b>Description:</b>	In order to finalise the order an appointment needs to be made. Two mandatory parameters: the telstraRef from Step 1, and the crdInformation. The crdInformation contains the requestItemId from Step 2, the connection date and the disconnection date. Ensure that the provisioningOption field is set to "One Step"
<b>Example Request:</b>	
<pre>&lt;RScheduleAppointmentRequest xmlns="http://telstra.com/lolo2/b2b/parts/2004/10/10"&gt;   &lt;request&gt;     &lt;telstraRef&gt;12345679&lt;/telstraRef&gt;     &lt;crdInformation&gt;       &lt;requestItemId&gt;10000006&lt;/requestItemId&gt;       &lt;provisioningOption&gt;One Step&lt;/provisioningOption&gt;       &lt;connectionCRDInfo&gt;         &lt;crd&gt;2006-07-12&lt;/crd&gt;         &lt;timeslot&gt;AM&lt;/timeslot&gt;       &lt;/connectionCRDInfo&gt;       &lt;disconnectionCRDInfo&gt;         &lt;crd&gt;2006-07-17&lt;/crd&gt;         &lt;timeslot&gt;PM&lt;/timeslot&gt;       &lt;/disconnectionCRDInfo&gt;     &lt;/crdInformation&gt;   &lt;/request&gt; &lt;/RScheduleAppointmentRequest&gt;</pre>	
<b>Example Response:</b>	
<pre>&lt;RScheduleAppointmentResponse xmlns="http://telstra.com/lolo2/b2b/parts/2004/10/10"&gt;   &lt;response&gt;     &lt;appointment&gt;       &lt;component&gt;Connection&lt;/component&gt;       &lt;commitmentReferenceNumber&gt;30000002&lt;/commitmentReferenceNumber&gt;       &lt;type&gt;Exchange&lt;/type&gt;       &lt;timeperiod&gt;         &lt;from&gt;2005-01-01T00:09:00.001Z&lt;/from&gt;         &lt;to&gt;2005-01-01T00:11:00.001Z&lt;/to&gt;       &lt;/timeperiod&gt;       &lt;alternateTimeslot&gt;PM&lt;/alternateTimeslot&gt;       &lt;requestItemId&gt;10000006&lt;/requestItemId&gt;     &lt;/appointment&gt;     &lt;nextOperation&gt;RequestService:cancelMultiStep&lt;/nextOperation&gt;     &lt;nextOperation&gt;RequestService:deleteRequestItem&lt;/nextOperation&gt;     &lt;nextOperation&gt;RequestService:scheduleAppointment&lt;/nextOperation&gt;     &lt;nextOperation&gt;RequestService:rescheduleAppointment&lt;/nextOperation&gt;     &lt;nextOperation&gt;RequestService:submitMultiStep&lt;/nextOperation&gt;   &lt;/response&gt; &lt;/RScheduleAppointmentResponse&gt;</pre>	

<b>3.16 Submit &amp; Finish</b>	
<b>Web Service:</b>	RequestService:submitMultiStep
<b>Description:</b>	Everything is complete, so simply submit the order to LOLIG. One mandatory parameter: the telstraRef from Step 1. Notes can also be added to the order as an optional second parameter.
<b>Example Request:</b>	
<pre>&lt;RSubmitMultiStepRequest xmlns="http://telstra.com/lolo2/b2b/parts/2004/10/10"&gt;   &lt;telstraRef&gt;12345679&lt;/telstraRef&gt;   &lt;requestNotes&gt;this is some notes&lt;/requestNotes&gt;   &lt;requestItemNotes&gt;     &lt;requestItemId&gt;10000006&lt;/requestItemId&gt;     &lt;notes&gt;blah blah blah&lt;/notes&gt;   &lt;/requestItemNotes&gt; &lt;/RSubmitMultiStepRequest&gt;</pre>	
<b>Example Response:</b>	
<pre>&lt;RSubmitMultiStepResponse xmlns="http://telstra.com/lolo2/b2b/parts/2004/10/10"&gt;   &lt;result&gt;1&lt;/result&gt;   &lt;associateRequestDetails&gt;     &lt;requestItemId&gt;10000006&lt;/requestItemId&gt;     &lt;associateTelstraRef&gt;12345679&lt;/associateTelstraRef&gt;   &lt;/associateRequestDetails&gt; &lt;/RSubmitMultiStepResponse&gt;</pre>	

## 4 DOCUMENT CONTROL SHEET

### Contact for Enquiries and Proposed Changes

If you have any questions regarding this document contact:

Name: Keith Berry

Designation: Online Training Manager

Phone: (07) 34552060

Issue No.	Issue Date	Nature of Amendment
1	30/06/2010	First Issue